

KEEPING YOU ON TRACK.

FKM BSM GASOLINE-POWERED ANGLE GRINDER

Fully mobile with the right amount of power:

The new BSM gasoline-powered angle grinder is a flexible tool that is perfect for simple hand grinding on rails and switches. The grip is adjustable for an ergonomic posture and less physical strain.

Simple operation

NEW 50 ccm engine

APPLICATIONS

For simple hand grinding on rails and switches

ADVANTAGES

- > Ergonomic work posture
- > Adjustable grip

TECHNICAL DATA

Length	730 mm
Width	300 mm
Height	300 mm
Weight	9.7 kg / 50 ccm engine



KEEPING YOU ON TRACK.

FKM TSB CUT-OFF DISC STORAGE BOX

A practical classic

The TSB cut-off disc storage box offers space for up to ten cut-off discs with a maximum diameter of 356 mm, making it a practical and indispensable helper. The box keeps the cut-off discs dry and secure during transport.

Sturdy aluminum box

Your cut-off discs remain dry and undamaged

APPLICATIONS

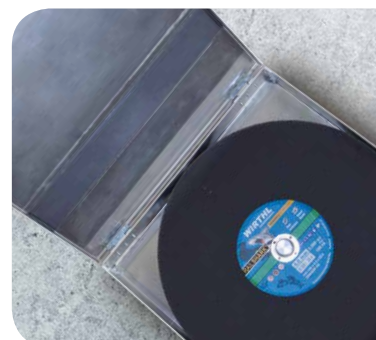
For secure transport and dry storage
of rail cut-off discs

ADVANTAGES

- > Secure and dry storage
- > Easy transport

TECHNICAL DATA

Length	370 mm
Width	370 mm
Height	50 mm
Suitable for	10 cut-off discs with a diameter up to 356 mm



KEEPING YOU ON TRACK.

FKM WZS 460H ROLLING MARK GRINDER

Precise and reliable

We developed the WZS 460H for fast and clean removal of rolling marks from the rail web. With quick setup and simple alignment thanks to the precision spirit level, this grinder meets the highest quality demands, as confirmed by Deutsche Bahn approval and many satisfied customers.

NEW DB approval

Fast setup

! Simple alignment

APPLICATIONS

For removing rolling marks from the rail web

ADVANTAGES

- > Fast setup with rail head hooks
- > Simple alignment with precision spirit level



TECHNICAL DATA

Length	1010 mm
Width	135 mm
Height	250 mm
Drive	Battery-powered angle grinder 230 - 16 V
Abrasive disc	Ø 170 x 40 mm
Weight	24 kg



KEEPING YOU ON TRACK.

FKM SGR BULK MATERIAL CHUTE

For pouring track ballast between the rails.

Lightweight and easy to install: The SGR ballast chute can be installed quickly and without tools. The aluminum construction with steel hooks fits perfectly on all ballast wagons used in Austria and can also be customized to your needs.

NEW Aluminum design

Simple installation

Fits all typical ballast wagons

APPLICATIONS

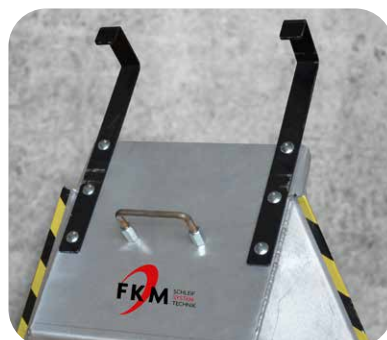
For pouring track ballast between the rails

ADVANTAGES

- > Aluminum construction with steel hooks
- > Installs quickly without tools
- > Fits all typical ballast wagons (in Austria)
- > Custom designs on request

TECHNICAL DATA

Material	Aluminium
Weight (aluminum design)	14 kg



KEEPING YOU ON TRACK.

FKM ISK HEX DRIVER BIT

APPLICATIONS

Adapter for impact drivers or torque drivers for fastening profile-free rail clamps

NEW Chrome vanadium design

Custom designs on request

TECHNICAL DATA

Length - short shaft design	92 mm
Length - long shaft design	118 mm
Hex driver	SW 22 mm
Nut	SW 39 mm
Material	Steel S235JR or chrome vanadium



KEEPING YOU ON TRACK.

FKM RTL DEPTH GAUGE

Measuring instrument for determining the groove depth.

This handy tool is indispensable for welding, grinding and finishing grooved rails: The RTL depth gauge allows you to quickly determine the groove depth.

ADVANTAGES

- > Robust and inexpensive measuring instrument
- > Simple and fast operation
- > Precision spirit level for alignment

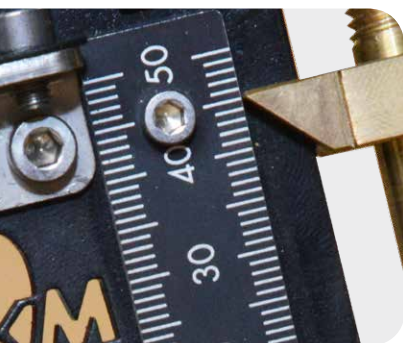
TECHNICAL DATA

Measuring range	1 - 50 mm
-----------------	-----------



Simple operation

Fast and precise groove depth measurement



FKM ALIGNMENT WEDGES

For precisely aligning weld joints

Choose from our pre-made selection of commonly used alignment wedges or request a custom solution. We would be happy to assist you!

Precise alignment of the weld joints

Custom designs on request

TECHNICAL DATA FORGED ALIGNMENT WEDGES

Dimensions	25 x 25 x 200 mm Available ex stock
Material	Forged drill steel, Hardened tip

TECHNICAL DATA FLAME-CUT ALIGNMENT WEDGES

Dimensions	Available in various dimensions and designs
Design	Gib head wedge / flat head wedge
Machining	Laser-cut or flame-cut
Material	S355J2+N



KEEPING YOU ON TRACK.

FKM GLR RAIL WHEELS

Long-lasting and smooth-running wheels

The GLR rail wheels from FKM are precisely machined and feature hardened surfaces to ensure a long life.

All profiles and radii are available

Custom designs on request

ADVANTAGES

- > Smooth running
- > Additionally supported wheel rims possible
- > Inexpensive

TECHNICAL DATA

Materials

Steel, aluminum or
plastic



KEEPING YOU ON TRACK.

FKM ET REPLACEMENT PARTS

You benefit from our flexibility!

FKM not only offers all replacement parts for its own products, we also sell a large selection of parts for typical products of other manufacturers. Our production facility in Austria can quickly supply just the components you need to get your project back on track – and at the best possible conditions.

NEW Parts for products of other manufacturers

Fast availability

Inexpensive

Top quality

Special parts on request

ADVANTAGES

- > Most parts hardened for longer service life
- > Large selection
- > Custom manufacturing
- > Modified replacement parts



KEEPING YOU ON TRACK.

FKM SSM SIDE GRINDER

Faster, more powerful, more ergonomic: Effortless grinding of side surfaces

The new ergonomic design of the SSM makes it even easier to reach the side surfaces of the rail. The gripping braces prevent the grinder from sliding off the rail, while the more powerful 50 ccm engine ensures fast and efficient work.

ADVANTAGES

- > Guided, dependable grinding of the weld joints
- > Reliably removes the desired amount of material
- > Ergonomic design

TECHNICAL DATA

Length	770 mm
Width	444 mm
Height	680 mm
Drive	Gasoline engine (4-stroke)
Power	1.47 kW (2 HP)
Cup size	Ø 80 x 60
Weight	15 kg

NEW With gripping braces

Reduced weight

More powerful engine (50 ccm)



KEEPING YOU ON TRACK.

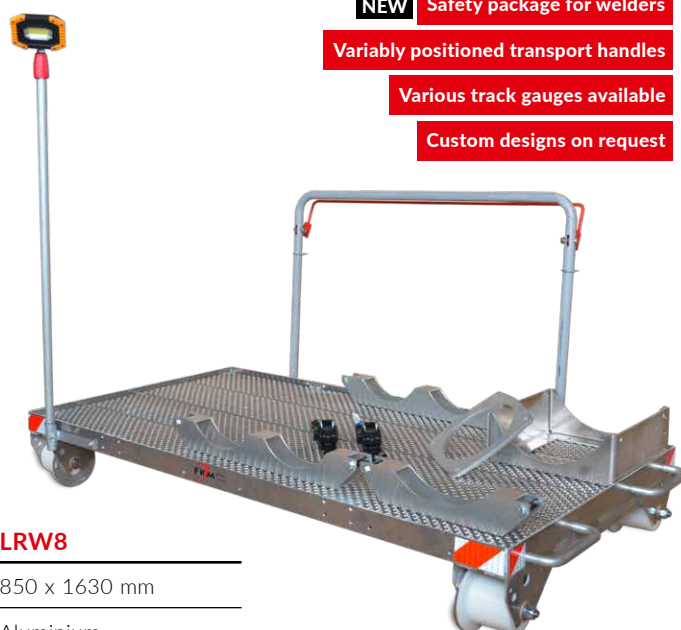
FKM LRW TRANSPORT CART

A safe and practical way to transport your tools, equipment and materials

The LRW transport cart combines safety and convenience while meeting all your individual needs. Choose between various track gauges and designs on insulating plastic rollers.

OPTIONS

- > Folding handle bar
- > Folding handle bar with dead man's brake
- > Light package – battery-powered LED
- > Safety package for welders



NEW Safety package for welders

Variably positioned transport handles

Various track gauges available

Custom designs on request

TECHNICAL DATA

	LRW7	LRW8
Dimensions	850 x 1630 mm	850 x 1630 mm
Material	Aluminium	Aluminium
Permissible load	700 kg	1000 kg
Weight	23 kg	26 kg
Rollers	Insulated plastic / ball bearings	Insulated plastic / ball bearings



KEEPING YOU ON TRACK.

FKM SHS GAUGE RETAINING BARS

For correcting wide or narrow tracks

Easy to use, flexible adjustment: The SHS gauge retaining bar is used to maintain the connection between rails where the track has widened or narrowed.

ADVANTAGES

- > Profile-free installation on the rail foot
- > Adjustable threaded spindle (lockable with second nut)
- > Bar / open-ended wrench (included)
- > Robust design
- > Powder-coated

TECHNICAL DATA

Weight	22 kg
For foot widths up to	150 mm
Standard gauge	1435 mm

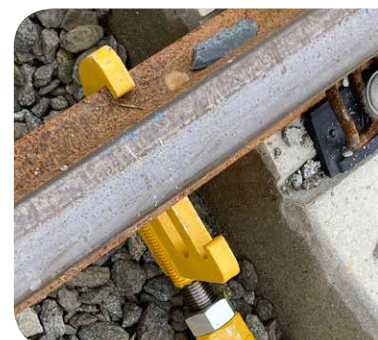
NEW Profile-free installation

Adjustable with open-ended wrench or bar

One tool for applying inward and outward force

Insulated

Various track gauges on request



KEEPING YOU ON TRACK.

FKM HSK/HSH STOP SIGN / SH2 SIGN

Lightweight, easy to install

The HSK/HSH stop signs are reflective on both sides and a breeze to install without tools.

Reflective film on both sides

Lightweight construction

ADVANTAGES

- > Simple and tool-free installation
- > Both sides reflective, meaning only one sign is required

TECHNICAL DATA

Length	630 mm
Width	630 mm
Height	480 mm
Material	Aluminium



FKM WSB LIGHT RAIL JOINT GRINDER

Light grinder for profile grinding, especially in urban tram systems

The WSB light rail joint grinder is designed for precise finish grinding of the weld joints and running edge up to an angle of 35 degrees. The electric motor ensures low noise, which is especially appreciated in urban areas.

NEW Simple operation
Low-noise
Environmentally friendly

ADVANTAGES

- > Rollers for transport
- > Electrically driven grinding spindle
- > Grinding spindle with multiple bearings
- > Precise guides
- > Optional: LED work light

TECHNICAL DATA

Length	1050 mm
Width	622 mm
Width with arm	1280 mm
Height	1100 mm
Weight	Approx. 83 kg
Motor power	3.5 kW
Elect. connection	16 A, 5-pole
Angle	-35° / 20°
Cup wheel	Ø 80 mm left-hand thread
Cup wheel speed	5,800 rpm



KEEPING YOU ON TRACK.

FKM HSM PRO RAIL HEAD PROFILE GRINDING MACHINE

The popular HSM Pro rail head profile grinding machine has every feature you need

The HSM Pro from FKM is suitable for all rail profiles. With its torsionally rigid frame and powerful 4-stroke engine, it achieves a perfect grind with high material removal. Precise guides ensure low vibrations and user-friendly operation.



NEW DB approval

Adjustable track gauge

Compact size for transport

Folding carry handles

OPTIONS

- > Stainless steel shelf for tools and accessories
- > Additional weights for higher grinding performance (2 x 14 kg)
- > LED spotlight
- > Ribbed extension arm

TECHNICAL DATA

Length/width/height	2100/1200/900 mm
Transport length	1560 mm
Track gauge	From 900 mm to 1450 mm
Cup wheel size	Ø 125 / Ø 150
Weight with aluminum wheels	135 kg
Weight with steel wheels	155 kg
Engine	Honda GXV 390
Power	7.6 kW
Swivel range	-40 / +20 degrees (Y-32/Y+27)



KEEPING YOU ON TRACK.

FKM **SBL/SBL light** GROOVED RAIL GRINDER

For grinding and finishing grooved rails

Choose from a wide range of options to customize the SBL and SBL light to your requirements. From solid rubber tires to LED lighting and accessory power sockets: We have thought of everything for you.

ADVANTAGES

- > Profiling of the rail head
- > Easy operation
- > Can be pushed on the road
- > Lighting and accessory power sockets

OPTIONS

- > Bevel gears for deburring and grinding the groove bottom
- > Frequency converter for speed optimization
- > Additional weight

TECHNICAL DATA

Length/width/height	1000/700/1150 mm
Weight	110 - 135 kg
Arm	1600 mm
Drive	Electric motor 3 x 400 V
Power	3.5 - 7.5 kW



NEW Available with FC

LED lighting

Solid rubber tires



KEEPING YOU ON TRACK.

FKM RG2 CORRUGATION GRINDING MACHINE

For reprofiling rails

The RG2 is designed for grinding new rails in the area of expansion joints, switches and tracks as well as for grinding surface flaws such as head checks or squats up to a depth of 1.5 mm. Additional strengths of this all-rounder include the grinding of rail corrugation and deburring up to -40° (about Y-32).

ADVANTAGES

- > Travel drive with fast installation
- > Fuel canister with quick replace system
- > Modular design
- > Fast setup / take-down
- > GRubber wheels for simple transport
- > Very high grinding performance
- > Lighting
- > Tool cabinet for all necessary tools

OPTIONS

- > Large generator
- > All-round lighting, horn
- > Switchable side lamps
- > Fire extinguisher 1 - 2 kg

NEW DB approval

High performance & simple operation

Swappable RG1/RG2 grinding modules on base frame

2 grinding shafts

Rapid restoration of the rail profile



TECHNICAL DATA

Length/width/height	2135/1166/967 mm
Weight	Approx. 450 kg, depending on options
4-stroke engine	690 cm ³ / 16.5 kW
Cup wheels	To Ø 150 mm / to 100 mm height
Grinding shafts	2 shafts with 5x bearings
Track gauge	1435 mm / adjustable
Swivel range	-40 / +20 degrees (Y-32/Y+27)
Tank volume	20 l



FKM RG1 RAIL GRINDER

NEW DB approval

High performance & simple operation

Swappable RG1/RG2 grinding
modules on base frame

Hand-guided rotating grinding method for the entire rail head

The RG1 rail grinder module can be used for the following work: high-performance grinding with surface grinding wheels; grinding new rails for tracks, switches and expansion joints; grinding surface flaws such as head checks, squats and corrugation up to a depth of 1.5 mm; deburring of double skin in the area of tracks and switches.



ADVANTAGES

- > Travel drive with fast installation
- > Fuel canister with quick replace system
- > Modular design
- > Fast setup / take-down
- > Rubber wheels for simple transport
- > Very high grinding performance
- > Lighting
- > Tool cabinet for all necessary tools

OPTIONS

- > Large generator
- > All-round lighting, horn
- > Switchable side lamps
- > Fire extinguisher 1 - 2 kg

TECHNICAL DATA

Length/width/height	2135/1166/967 mm
Weight	Approx. 450 kg, depending on options
4-stroke engine	690 cm ³ / 16.5 kW
Abrasive disc	To Ø 250 mm / to 60 mm width
Grinding shaft	5x bearings
Track gauge	1435 mm / adjustable
Swivel range	+/- 2 degrees fine adjustment
Tank volume	20 l



KEEPING YOU ON TRACK.

FKM SMU EL SCREWING MACHINE CONVERSION

Conversion of your screwing machines to use electric motors

FKM will convert your combustion-driven screwing machine to use an electric drive. This makes the machine quieter and more environmentally friendly for use in tunnels, subways and urban areas.

NEW FC for speed optimization

Simple operation

Low-noise

Environmentally friendly

ADVANTAGES

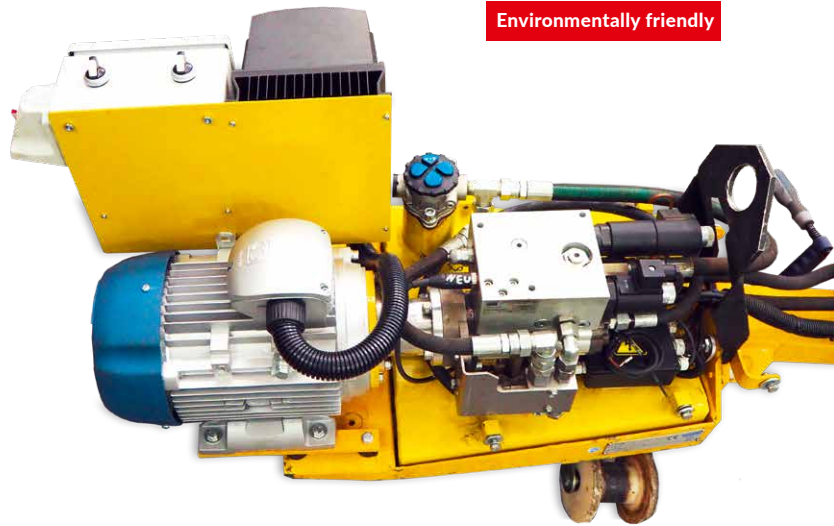
- > Simple operation, easy starting
- > No exhaust gas in tunnels
- > Reduced noise exposure
- > Speed regulated by frequency converter
- > Can be converted back to a combustion engine, associated documentation included

OPTIONS

- > Almost any screwing machines can be converted
- > A number of variants are possible
- > Our technical field service is available to assist you

TECHNICAL DATA

Screwing machine type	To be determined
FC	4.0 kW design IP66w
Motor	2.2 kW
Elect. connection	16 A, 5-pole



KEEPING YOU ON TRACK.

FKM SHT LIFTING BEAM

Modular design

Lifting power varies based on design

Available in various sizes
and load capacities

For safe lifting and placement of heavy loads

Heavy, long and bulky loads can be safely lifted and placed with the SHT lifting beam. With optimal weight distribution and low deflection, you can move rail sections, track sections and switch elements without taking risks.

OPTIONS

> Custom designs on request



FKM RSA GRINDING TRAILER

NEW

Custom solutions

Mounting on existing chassis

For grinding rails using grinding segments

The RSA is the ideal solution for grinding tram rails using grinding segments. It can be used for preventive grinding to keep rail corrugation at bay as well as for grinding out rail defects and cleaning off soiled or black rails.

ADVANTAGES

- > Can be pushed or pulled
- > Requirements to be coordinated with the user
- > Low-maintenance equipment
- > Control from the towing vehicle via WiFi remote control
- > Rinsing water tank with capacity of 2,800 liters
- > Adjustable contact pressure
- > Power can be supplied from the towing vehicle
- > Vehicle can travel in traffic
- > Camera monitoring of the grinding environment
- > Body of stainless steel
- > On-board compressed air supply
- > Display of grinding segment consumption



TECHNICAL DATA (type-dependent)

Length/width/height	3400/2150/1800 mm
Weight (empty)	Approx. 4,200 kg
Weight (loaded)	Approx. 7,000 kg
Water tank	Approx. 2,800 l
Elect. connection	32 A, 5-pole
Compressor	On board
Grinding segment	69/60x90x155
Number of segments	3x per side



KEEPING YOU ON TRACK.

FKM SSV IMPACT DRIVER EXTENSION

Don't work hard, work smart!

FKM cares about your health and well-being! We developed the SSV impact driver extension to help you work in an upright, ergonomic posture and avoid exposure to unnecessary vibrations.

NEW

We care about your health!

ADVANTAGES

- > Light and robust aluminum construction
- > Vibration-damped grip
- > Extension can be used with ¾" and 1" attachments
- > Tool-free attachment of the extension

TECHNICAL DATA

Length	450 mm
Available for	Impact drivers with ¾" or 1" chuck
Material	Aluminium
Weight	3.5 kg



KEEPING YOU ON TRACK.

FKM

FHW-3

GAS CYLINDER RETAINER FOR WAGONS

Easily installed and removed retainer
with quick-clamping function for safely
transporting gas cylinders.

Designed for one propane and two
oxygen cylinders.

NEW

Used by the ÖBB

APPLICATIONS

For safely transporting gas cylinders
on a BWG 63 (rail wagon) TSI type 9750

ADVANTAGES

- > Lightweight construction
- > Quick installation without tools
- > Includes 2 straps LC 300 daN



TECHNICAL DATA

Length	1010 mm
Width	435 mm
Height	400 mm
Weight	7,7 kg



KEEPING YOU ON TRACK.

FKM

KSK

COMBINATION DRIVER HEAD

A new level of mobility in track construction

The ideal complement to the FKM SSV impact driver extension.

The innovative combination driver head KSK from FKM is the ideal solution for installing and removing 41 mm and 21x28 mm hex head bolts.

NEW

Replaces 41 mm and 21x28 mm hex head drivers

For efficient track construction work

Including split pin and rubber ring

ADVANTAGES OF THE SSV IMPACT DRIVER EXTENSION

- > Light and robust aluminum construction
- > Vibration-damped grip
- > Extension can be used with ¾" and 1" attachments, depending on the design
- > Tool-free attachment of the extension

TECHNICAL DATA OF THE SSV IMPACT DRIVER EXTENSION

Length	450 mm
Available for	impact drivers with ¾" or 1" chuck
Material	aluminium



FKM

LRW-7.22

LRW-7.22-2S

SEPARABLE TRANSPORT CART

A new level of mobility in track construction

The transport cart can be separated into four parts.

Variably positioned carry handles. It can be assembled with a track gauge of 1435 mm or 1000 mm (other track gauges on request).

NEW Separates into 4 parts

Saves transport space

Optional track gauge adjustment 1435 mm / 1000 mm

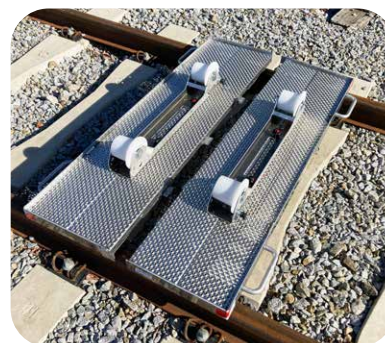
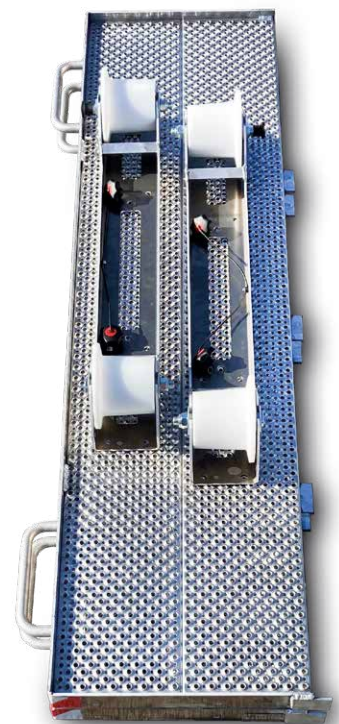
ADVANTAGES

- > Saves space during transport
- > Assembly without tools
- > Heaviest part 11 kg
- > Largest part 450 x 1630 mm

OPTIONS

- > Adjustable track gauge 1435 / 1000 mm (tool-free)

TECHNICAL DATA	Gauge 1435	Gauge 1435 + 1000
Dimensions	850 x 1630 mm	850 x 1630 mm
Material	Aluminium	Aluminium
Permissible load	700 kg	700 kg
Weight	32 kg	36 kg
Rollers	Insulated plastic / ball bearings / brake	Insulated plastic / ball bearings / brake



KEEPING YOU ON TRACK.

FKM

RLM-33

CHECK RAIL INSTALLATION TOOL -33

For safe installation and removal of UIC 33 check rails!

Ergonomics and safety for maintenance work in switch areas. The powder-coated installation tool is available in sets of 3 or 4.

NEW

Reduces risk of accidents

Simplifies installation and removal

Available in sets of 3 or 4

APPLICATIONS

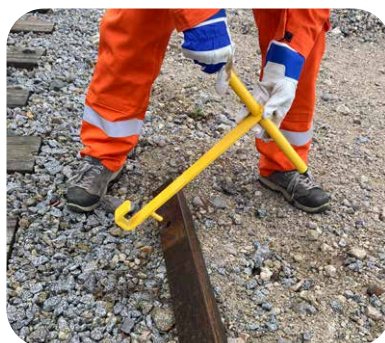
Safe and ergonomic installation work in switch areas

ADVANTAGES

- > Simple operation
- > Prevent accidents

TECHNICAL DATA

Dimensions	510x460x50 mm
Weight (1 tool)	2,6 kg
Material	Steel / powder-coated



KEEPING YOU ON TRACK.

FKM WXM-L LIGHTWEIGHT DEBURRING MACHINE

Grinder for removing burrs and double skin.

Compatible with flat-bottomed and grooved rails, for regrounding grooves, deburring running edges and removing double skin.

NEW GX270-Power

LED lighting

Track gauge: Adjustable from 800 mm to 1,435 mm

NEW

Including abrasive disc set:
3 each, soft/medium/hard

ADVANTAGES

- > Ribbed belt drive
- > Frame disassembles
- > Insulated aluminum wheels
- > Saves transport space

OPTIONS

- > Rollers for grooved rails
- > Optional electric motor



TECHNICAL DATA (version GX270)

Length / width / height	2.050/1.400 mm / 1.210 mm / 880 mm
Total weight	113 kg
Swivel range	+/- 35°
Motor	Honda GX270 6,3 KW
Maximum abrasive disc size	250x32x25 mm
Abrasive disc speed	3600 rpm



Abrasive disc set