

FKM

USP

PORTABLE LIFTING GANTRY

A new level of mobility in track construction

For safely lifting and moving large switch components and rails.

The aluminum construction is lightweight and easily to assemble in two widths. The USP was developed in close cooperation with railroad engineers as a user-friendly solution that sets new standards for low weight and simple operation.

ADVANTAGES

- > Very lightweight design
- > Heaviest part **only** 27 kg
- > Also for moving conductor rails (third rail).

Very low unladen weight

Extra-wide design 2800 mm

Extremely user-friendly

Custom designs clearance 1815 mm / 3000 mm



TECHNICAL DATA

	2 meters	2,9 meters
Length	2050 mm	2800 mm
Width	1000 mm	1200 mm
Height	1400 mm	1980 mm
Weight	64 kg	75 kg
Max. load	1000 kg	1350 kg
Weight trolley incl. roller rail clamp	15 kg	15 kg



KEEPING YOU ON TRACK.

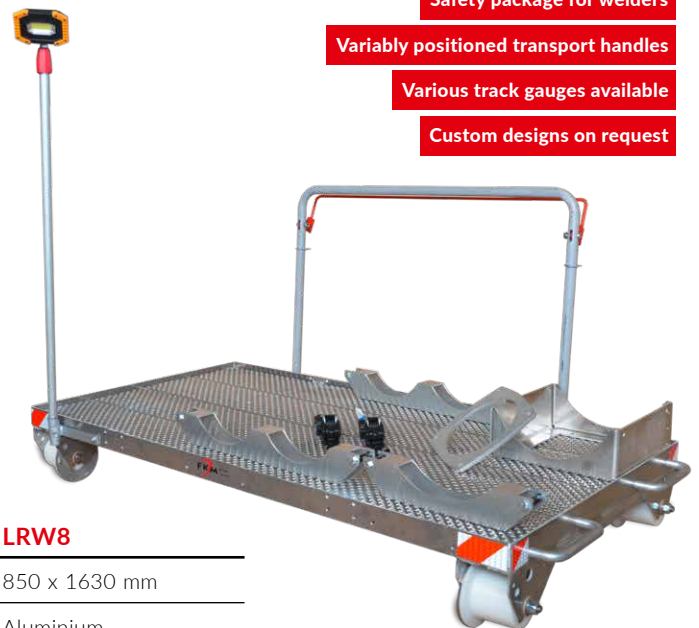
FKM LRW TRANSPORT CART

A safe and practical way to transport your tools, equipment and materials

The LRW transport cart combines safety and convenience while meeting all your individual needs. Choose between various track gauges and designs on insulating plastic rollers.

OPTIONS

- > Folding handle bar
- > Folding handle bar with dead man's brake
- > Light package – battery-powered LED
- > Safety package for welders



Safety package for welders

Variably positioned transport handles

Various track gauges available

Custom designs on request

TECHNICAL DATA

	LRW7	LRW8
Dimensions	850 x 1630 mm	850 x 1630 mm
Material	Aluminium	Aluminium
Permissible load	700 kg	1000 kg
Weight	23 kg	26 kg
Rollers	Insulated plastic / ball bearings	Insulated plastic / ball bearings

product video



KEEPING YOU ON TRACK.

FKM

LRW-7.22 LRW-7.22-2S

SEPARABLE TRANSPORT CART A new level of mobility in track construction

The transport cart can be separated into four parts.

Variably positioned carry handles. It can be assembled with a track gauge of 1435 mm or 1000 mm (other track gauges on request).

Separates into 4 parts

Saves transport space

Optional track gauge adjustment 1435 mm / 1000 mm

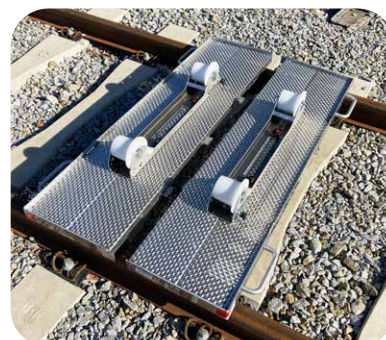
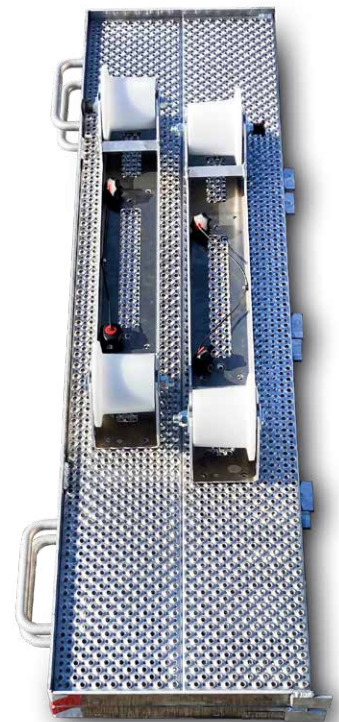
ADVANTAGES

- > Saves space during transport
- > Assembly without tools
- > Heaviest part 11 kg
- > Largest part 450 x 1630 mm

OPTIONS

- > Adjustable track gauge 1435 / 1000 mm (tool-free)

product video



TECHNICAL DATA	Gauge 1435	Gauge 1435 + 1000
Dimensions	850 x 1630 mm	850 x 1630 mm
Material	Aluminium	Aluminium
Permissible load	700 kg	700 kg
Weight	32 kg	36 kg
Rollers	Insulated plastic / ball bearings / brake	Insulated plastic / ball bearings / brake

KEEPING YOU ON TRACK.

FKM

LRW-A

The practical emergency tool

For safe transport during emergencies or on-call deployments.

The robust aluminum frame with ball bearing plastic rollers can be pushed effortlessly to the work site while transporting up to 200 kg of tools.

ADVANTAGES

- > Also serves as a storage tray in the vehicle
- > Even fits in the luggage compartment of passenger cars

TECHNICAL DATA

Dimensions	1580 x 1070 mm
Material	Aluminium
Permissible load	200 kg
Weight	17,5 kg
Rollers	Insulated plastic

Very light - only 17.5 kg

Extends to fit track gauges 760 / 900 / 1,000 / 1,435 mm



product video



KEEPING YOU ON TRACK.

FKM SRZ ROLLER RAIL CLAMP

For safe lifting and longitudinal movement of
vignole rails / subway conductor rails.

ADVANTAGES

- > Compact design
- > The handles reduce the risk of crushing injuries for greater safety

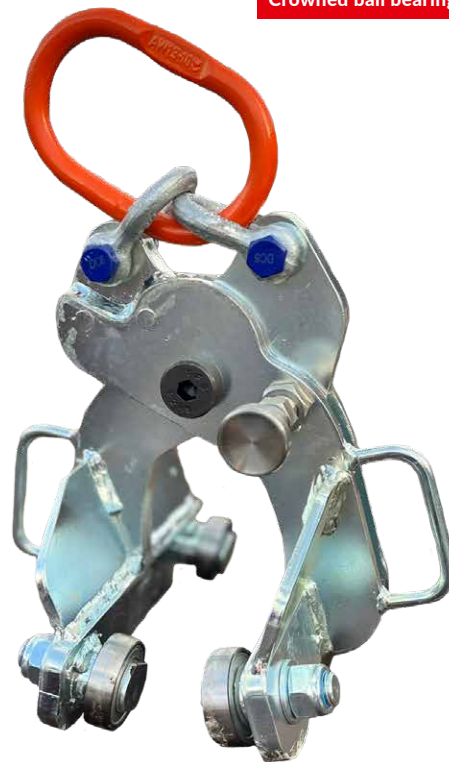
TECHNICAL DATA

Length	max. 240 mm
Width	215 mm
Max. height	250 mm
Weight	8 kg
Max. load	1500 kg

Including large lifting eye

Indexing bolt / safety bolt

Crowned ball bearings as running rollers



KEEPING YOU ON TRACK.

FKM

FHW-3

GAS CYLINDER RETAINER FOR WAGONS

Easily installed and removed retainer with quick-clamping function for safely transporting gas cylinders.

Designed for one propane and two oxygen cylinders.

Used by the ÖBB

APPLICATIONS

For safely transporting gas cylinders on a BWG 63 (rail wagon) TSI type 9750

ADVANTAGES

- > Lightweight construction
- > Quick installation without tools
- > Includes 2 straps LC 300 daN



TECHNICAL DATA

Length	1010 mm
Width	435 mm
Height	400 mm
Weight	7,7 kg



KEEPING YOU ON TRACK.

FKM STS-60 RAIL SUPPORT SYSTEM

For secure, friction-optimized positioning
of long rails.

Variable height adjustment

ADVANTAGES

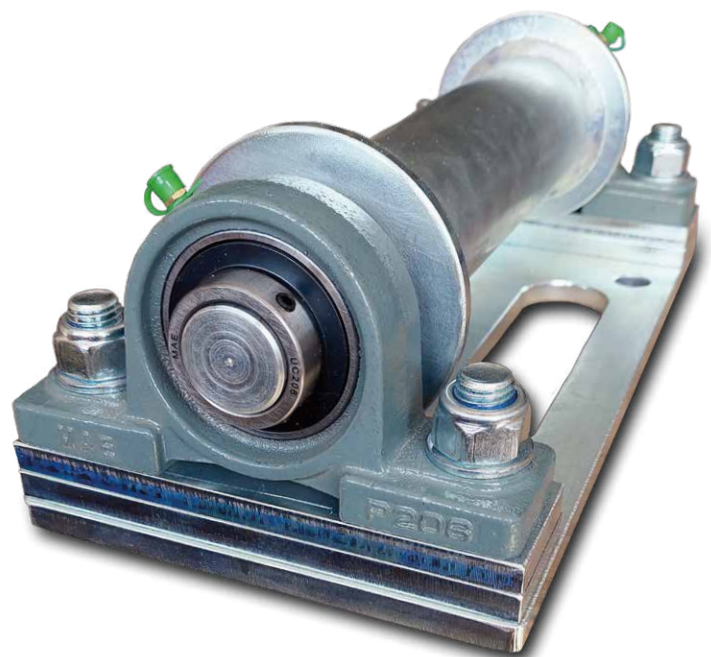
- > Minimized friction thanks to ball bearings
(permanently lubricated, but can be relubricated)
- > Height-adjustable with adapter plates
(103 - 133 mm)
- > Modular design
- > Galvanized

ACCESSORIES

- > Compensation plates

TECHNICAL DATA (Standard version with 2 adapter plates each)

Load capacity	1000 kg
Weight	11 kg
Dimensions	355 x 165 x 120 mm
Roller width (inside)	220 mm
Roller diameter	60 mm



KEEPING YOU ON TRACK.

FKM SHT LIFTING BEAM

Modular design

Lifting power varies based on design

Available in various sizes
and load capacities

For safe lifting and placement of heavy loads

Heavy, long and bulky loads can be safely lifted and placed with the SHT lifting beam. With optimal weight distribution and low deflection, you can move rail sections, track sections and switch elements without taking risks.

OPTIONS

> Custom designs on request



FKM SB-SVG SLEEPER LAYING MACHINE

Type Center Grip Model 159-5

The sleeper layer from Sonnenberg is an innovative new development in laying technology. The central mounting of the sleepers allows them to be placed against a guide rail, making alignment of the sleepers unnecessary.

ADVANTAGES

- > No opening of the drop sides required
- > Permits placing against a guide rail
- > Very compact design saves space during transport
- > Adapts very easily to the sleeper type
- > Adaptable to all quick-change systems



Very small loading dimensions

No opening of the drop sides required

TECHNICAL DATA

Load capacity	3300 kg
Min. sleeper width	280 mm
Max. sleeper separation	750 mm
Weight of variant 159-5 for 5 sleepers	approx. 700 kg without rotator
Smallest transport dimensions (variant 159-5)	1550 x 1000 mm

product video



KEEPING YOU ON TRACK.

FKM
SB-SZM-155
RAIL CARRYING CLAMP
Model 155

For safe loading and transportation of vignole rails.
Including large lifting eye for easy attachment of the
chain.

Low overall height

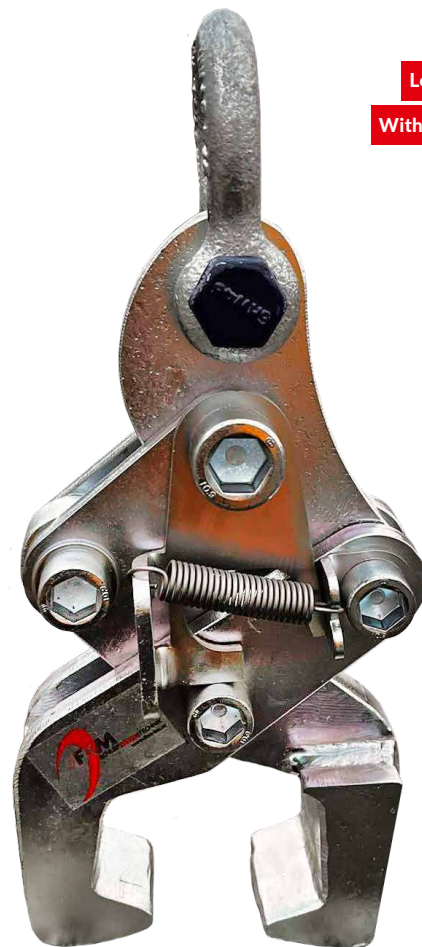
With locking function

ADVANTAGES

- > Simple operation
- > Locking function
- > Low overall height (without lifting eye)
- > High load capacity of 2 tons

TECHNICAL DATA

Weight	5,5 - 6 kg
Load capacity	2000 kg
Suitable rail types	UIC60, S49, S54



FKM

SB-SHT

RAIL LIFTING BEAM

Hydraulically telescoping rail beam

For safe lifting of rails and switch sections.

The hydraulic adjustment of the length and the hydraulic clamping of the rail head significantly reduce the risk of injury. A safety device prevents unintentional opening of the grippers when the load is raised. The hydraulic cylinders and lines are housed inside the beam for protection.

Hydraulic telescoping

Hydraulic clamping of the rail

ADVANTAGES

- > Adaptable to all quick-change systems
- > Including practical transport frame
- > For rails up to 18.5 m (The length of the lifting device must be coordinated with the rail manufacturer.)
- > Special sizes on request



TECHNICAL DATA

Model 121-T-6m

Width	310 mm
Height to rotator mounting plate	600 mm
Length	3970 - 6030 mm
Load capacity	2500 kg at 4 m / 2000 kg at 6 m
Weight without rotator	approx. 400 kg

